

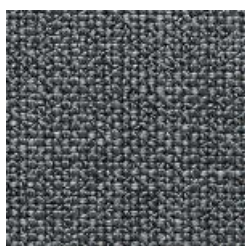
TUNDRA



474



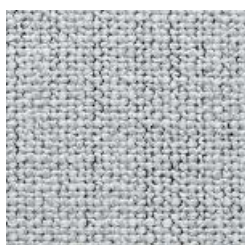
475



476



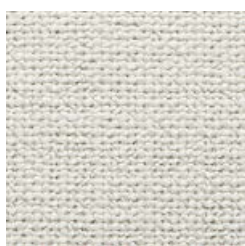
478



479



996-EC



996-EF

TUNDRA

EN

Composition: 42% Viscose, 38% Cotton, 14% Poly acrylic, 6% Polyester
Maintenance: Vacuum regularly or professional Dry-clean
Abrasion Resistance: 30.000 Martindale cycles
Flammability: EN 1021 part 1&2

DE

Zusammensetzung: 42% Viscose, 38% Baumwolle, 14% Poly Akryl, 6% Polyester
Reinigung: Regelmässig staubsaugen. Professionelle Trockenreinigung
Scheuerfestigkeit: 30.000 Martindale
Feuerschutz: EN 1021 part 1&2

FR

Composition: 42% Viscose, 38% Coton, 14% Poly acryl, 6% Polyester
Nettoyage: Aspirer régulièrement. Nettoyage á sec professionnel
Résistance á l'abrasion: 30.000 cycles Martindale
Normes au feu: EN 1021 part 1&2

DK

Materiale: 42% Viscose, 38% Bomuld, 14% Poly akryl, 6% Polyester
Rengøring: Støvsug regelmæssigt eller professionel rens
Slidstyrke: 30.000 Martindale
Flammesikring: EN 1021 part 1&2