

BOUCLE



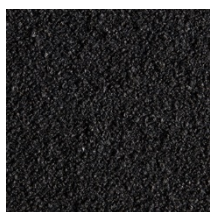
342



343



346

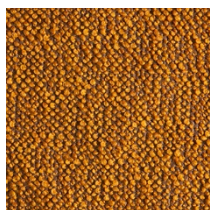


344



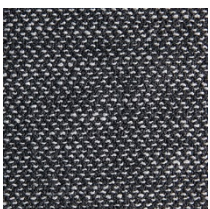
345

ISOLA



348

PUNTINO



996-PW

BOUCLE

EN

Composition: 34% Viscose, 33% Polyacrylic, 17% Wool, 8% Polyester, 4% Linen, 4% Cotton
Maintenance: Vacuum regularly or professional Dry-clean
Abrasion Resistance: 50.000 Martindale cycles

DE

Zusammensetzung: 34% Viskose, 33% Polyacryl, 17% Wolle, 8% Polyester, 4% Leinen, 4% Baumwolle
Reinigung: Regelmässig staubsaugen. Professionelle Trockenreinigung
Scheuerfestigkeit: 50.000 Martindale

FR

Composition: 34% Viscose, 33% Polyacrylique, 17% Laine, 8% Polyester, 4% Lin, 4% Coton
Nettoyage: Aspirer régulièrement. Nettoyage à sec professionnel
Résistance à l'abrasion: 50.000 cycles Martindale

DK

Materiale: 34% Viskose, 33% Polyacryl, 17% Uld, 8% Polyester, 4% Linned, 4% Bomuld
Rengøring: Støvsug regelmæssigt eller professionel rens
Slidstyrke: 50.000 Martindale

ISOLA

EN

Composition: 42% Polyester, 27% Wool, 26% Polyacrylic, 5% Cotton
Maintenance: Vacuum regularly or professional Dry-clean
Abrasion Resistance: 60.000 Martindale cycles

DE

Zusammensetzung: 42% Polyester, 27% Wolle, 26% Polyacryl, 5% Baumwolle
Reinigung: Regelmässig staubsaugen. Professionelle Trockenreinigung
Scheuerfestigkeit: 60.000 Martindale

FR

Composition: 42% Polyester, 27% Laine, 26% Polyacrylique, 5% Coton
Nettoyage: Aspirer régulièrement. Nettoyage à sec professionnel
Résistance à l'abrasion: 60.000 cycles Martindale

DK

Materiale: 42% Polyester, 27% Uld, 26% Polyacryl, 5% Bomuld
Rengøring: Støvsug regelmæssigt eller professionel rens
Slidstyrke: 60.000 Martindale

PUNTINO

EN

Composition: 42% Viscose, 32% Linen, 11% Polyester, 9% Cotton, 6% Polyamide
Maintenance: Vacuum regularly or professional Dry-clean
Abrasion Resistance: 100.000 Martindale cycles

DE

Zusammensetzung: 42% Viscose, 32% Leinen, 11% Polyester, 9% Baumwolle, 6% Polyamid
Reinigung: Regelmässig staubsaugen. Professionelle Trockenreinigung
Scheuerfestigkeit: 100.000 Martindale

FR

Composition: 42% Viscose, 32% Laine, 11% Polyester, 9% Coton, 6% Polyamide
Nettoyage: Aspirer régulièrement. Nettoyage à sec professionnel
Résistance à l'abrasion: 100.000 cycles Martindale

DK

Materiale: 42% Viskose, 32% Linned, 11% Polyester, 9% Bomuld, 6% Polyamid
Rengøring: Støvsug regelmæssigt eller professionel rens
Slidstyrke: 100.000 Martindale